



RRANGEMASTER
SYSTEMS

Installing and setting up a new chip card reader

Revision date: 03.03.2021
File name: HOWTO_USB_ENG.pdf

TABLE OF CONTENTS

Introduction	3
Connecting USB cable	3
Download driver	3
Configuration for Windows XP	4
Start control panel	4
Start Device Manager	5
Selection of interfaces	6
Reconfiguration of COM9 port	7
Warning	8
Restarting the system	8
Configuration for Windows 7	9
Start control panel	9
Start Device Manager	10
Selection of interfaces	10
Reconfiguration of COM9 port	11
Warning	12
Restart the system	12

Installation and setup of a Rangemaster X3 chip card reader

Introduction: If you connect a new chip card reader, the Windows system (Windows Embedded, Windows XP, Windows 7, Windows 8) will assign the next higher free COM port.

In order to use the chip card reader correctly in the Rangemaster X3 program, it must be configured always as COM9.

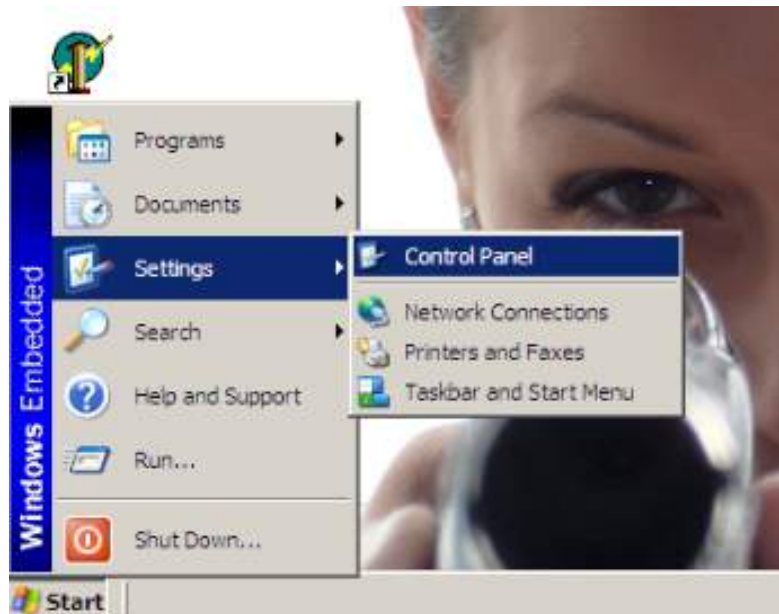
First, make sure that the appropriate driver for the FT232RL chip has been installed. Also, make sure that the USB cable is connected to both the smart card reader and the computer.



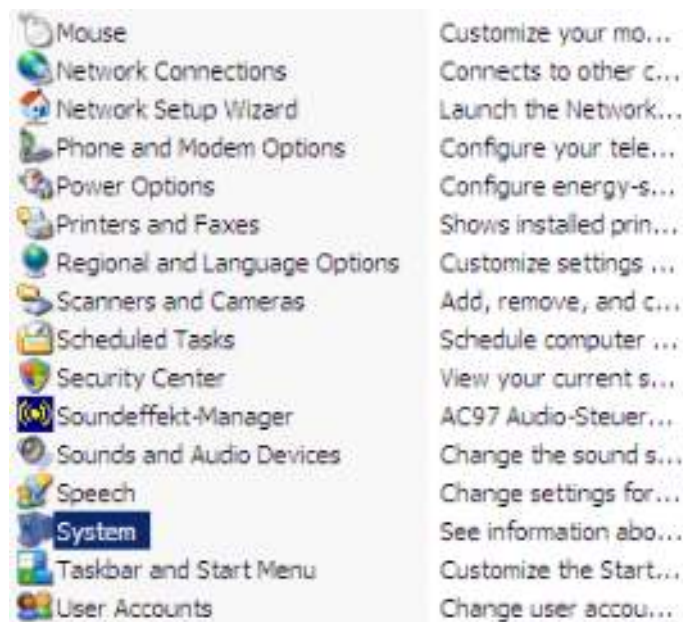
You can download the FT232RL driver from the website www.ftdi.com

WINDOWS XP:

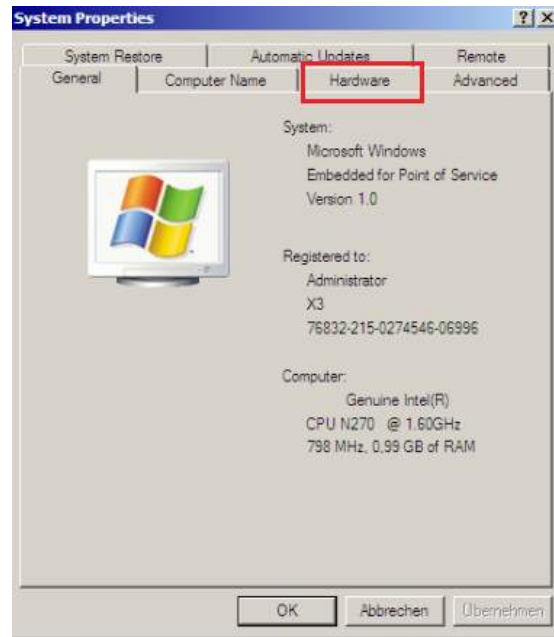
Go to the <Start> menu, select <Settings > and click <Control Panel>.



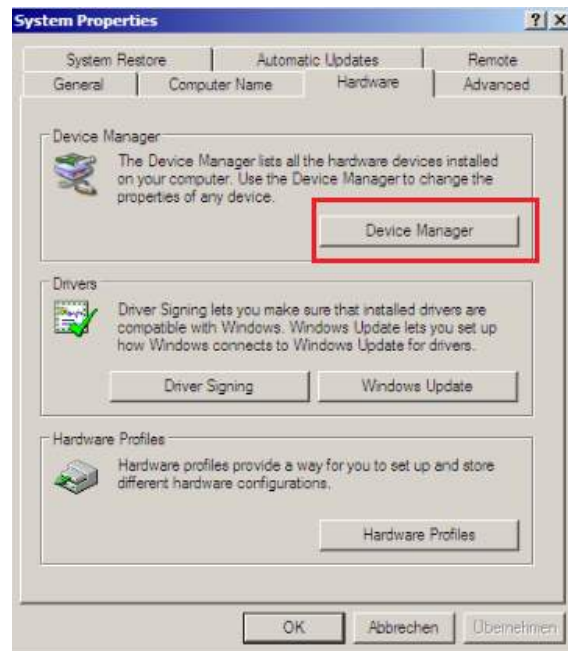
Double-click the <System> icon.



A new window opens and you click the <Hardware> tab.



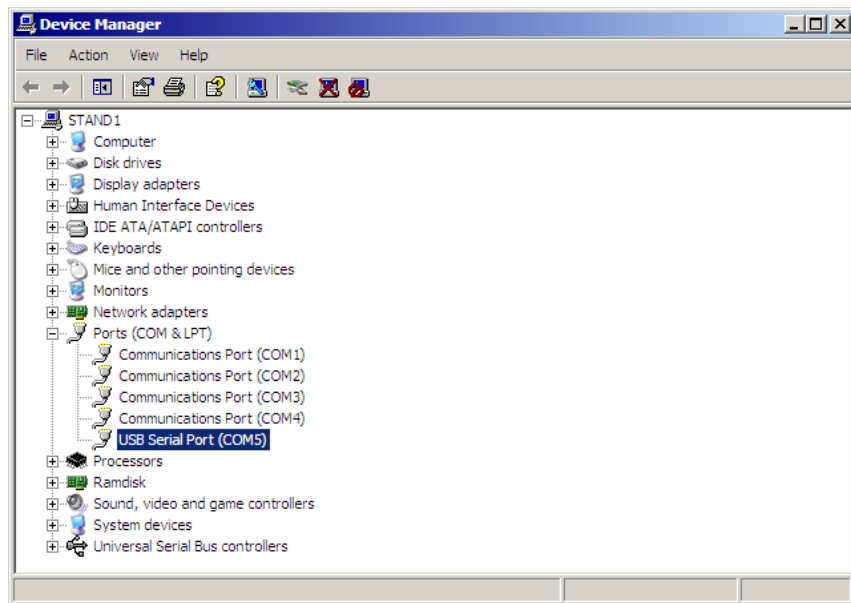
Click the <Device Manager> button.



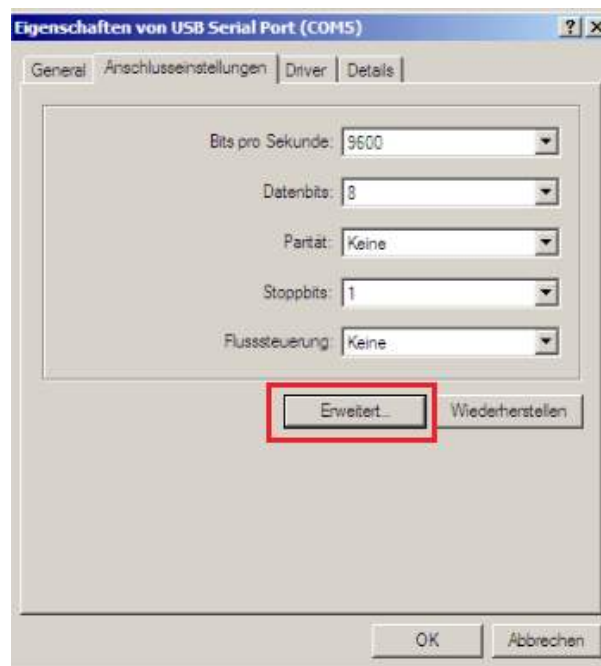
A new window opens and you click on <Ports (Com & LPT)> once.

Locate <USB Serial Port (COM ??? *)> and click twice on it.

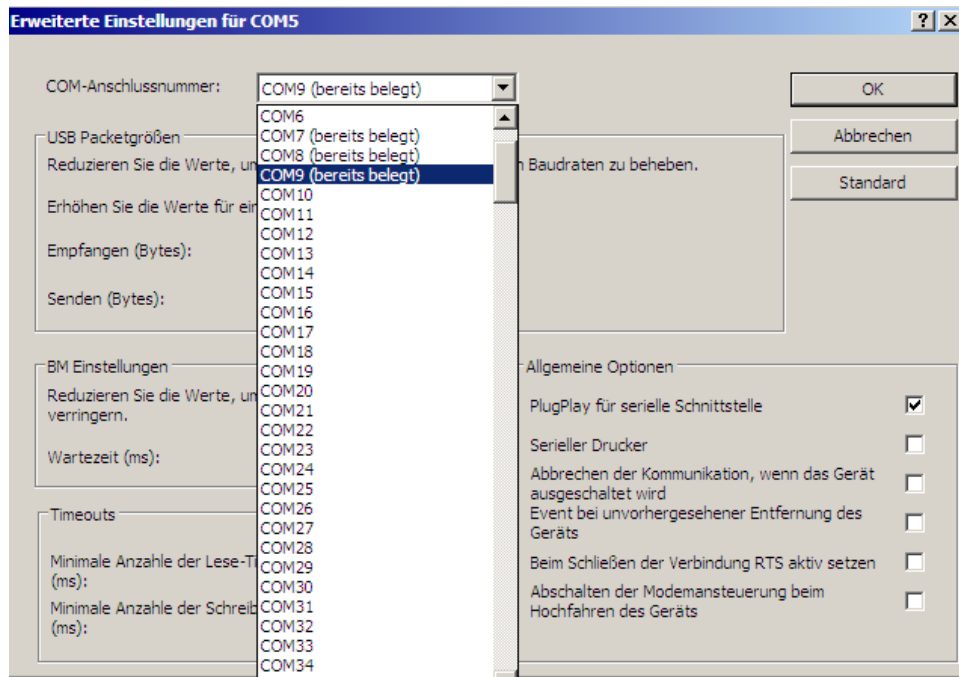
??? * - The number may be different. For example: COM2 or COM10.



Select the <Port Settings> tab and click <Advanced>.

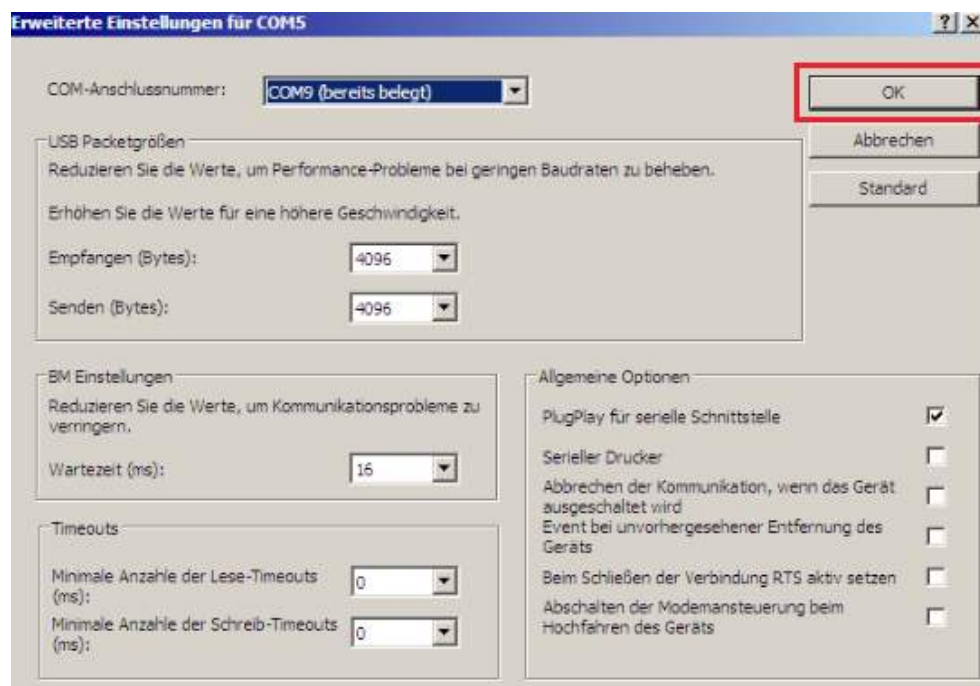


In <Advanced settings for COM ??> in the <COM port number> list, select <COM9 (already used) *>.

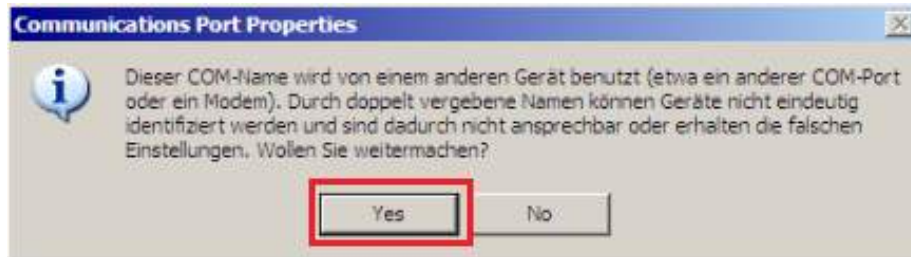


* The specification (already used) is not mandatory.

After selecting COM9, click <OK> in the upper right corner of the window.



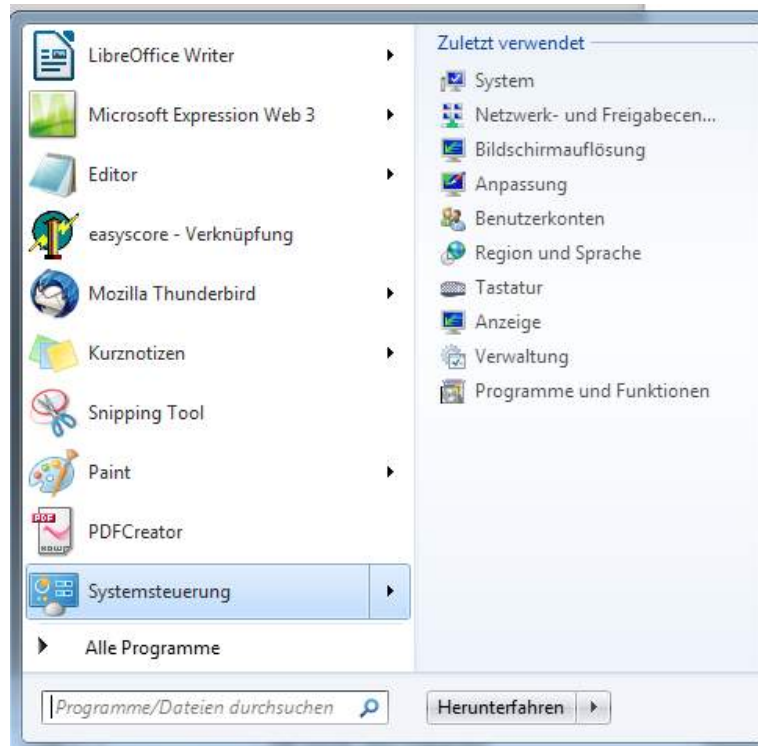
Most likely you will now see a message that the COM9 port is already in use. Ignore this message and click <Yes> or <Okay>.



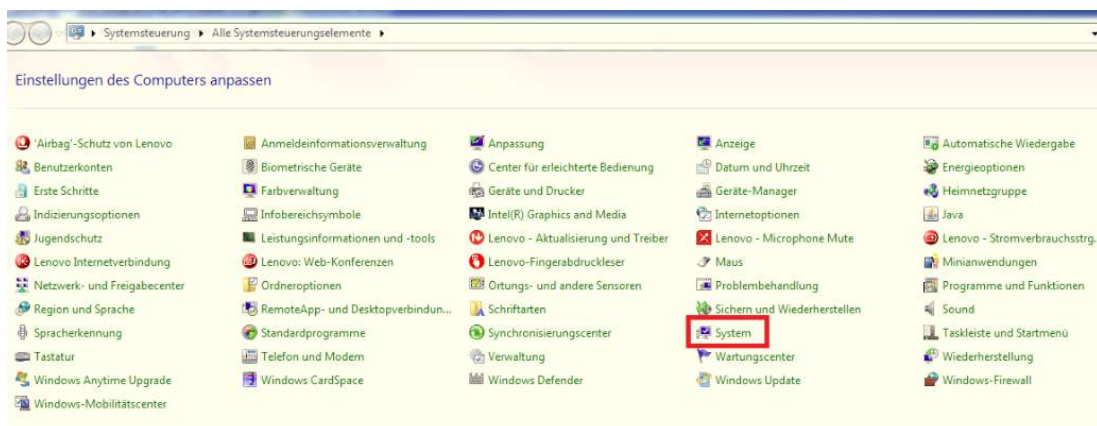
Close all windows and restart the computer.

WINDOWS 7:

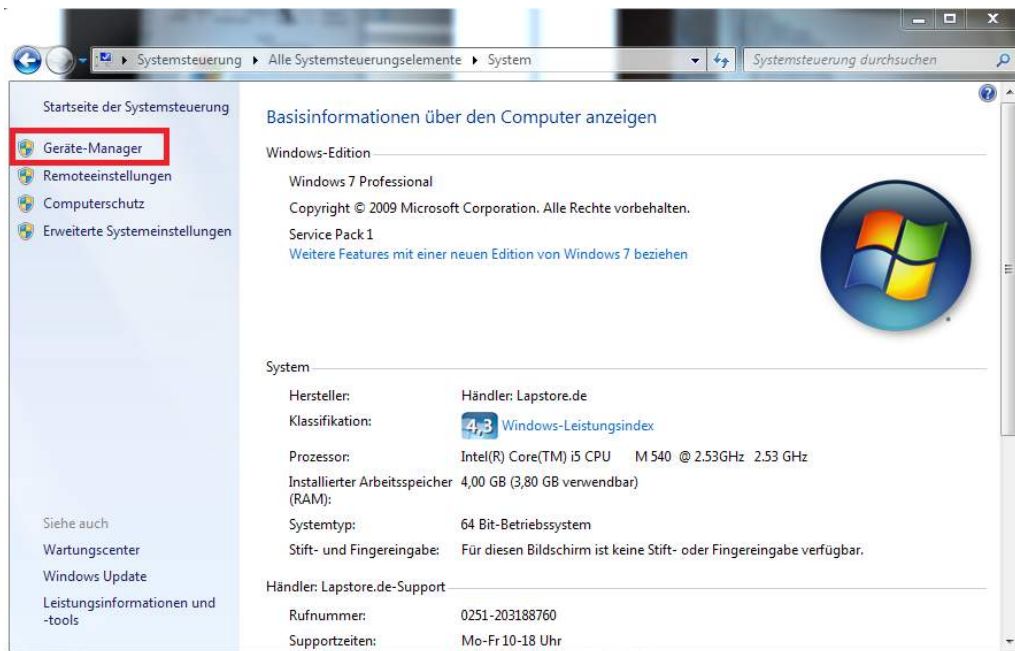
Go to the <Start> menu and select <Control Panel>.



Now click <System>.

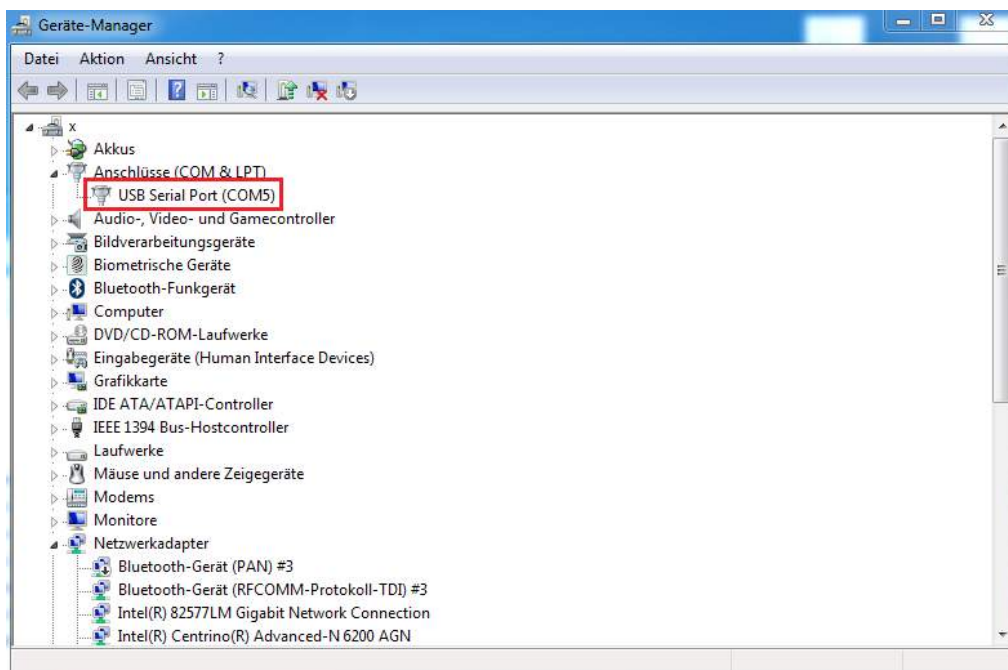


Click the <Device Manager> entry.

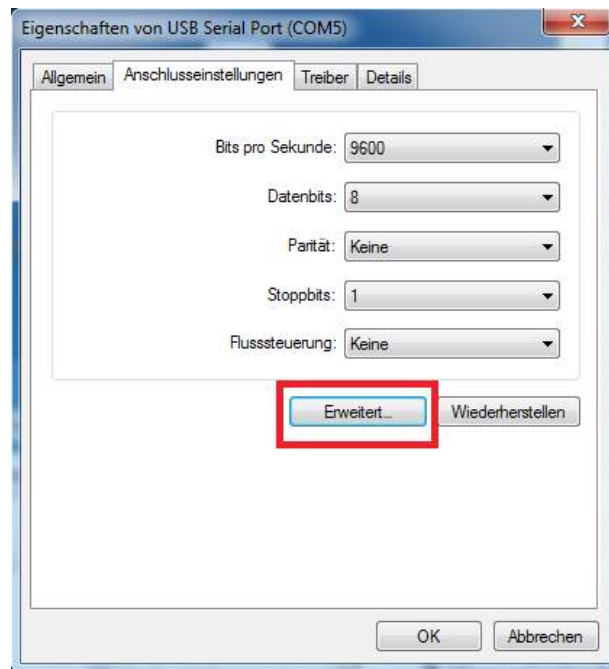


Locate <USB Serial Port (COM ??? *)> and click twice on it.

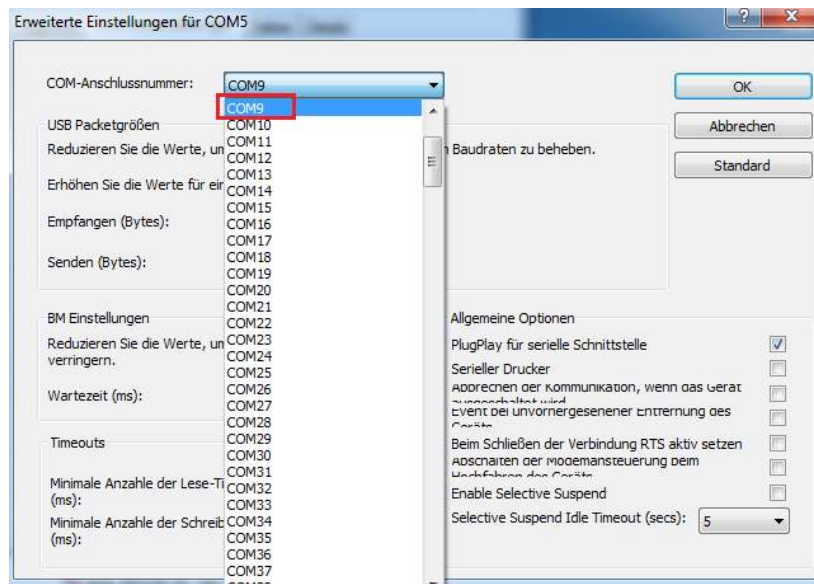
??? * - The number may be different. For example: COM2 or COM10.



Select the <Port Settings> tab and click <Advanced>.



In <Advanced settings for COM ??> in the <COM port number> list, select <COM9 (already used) *>.

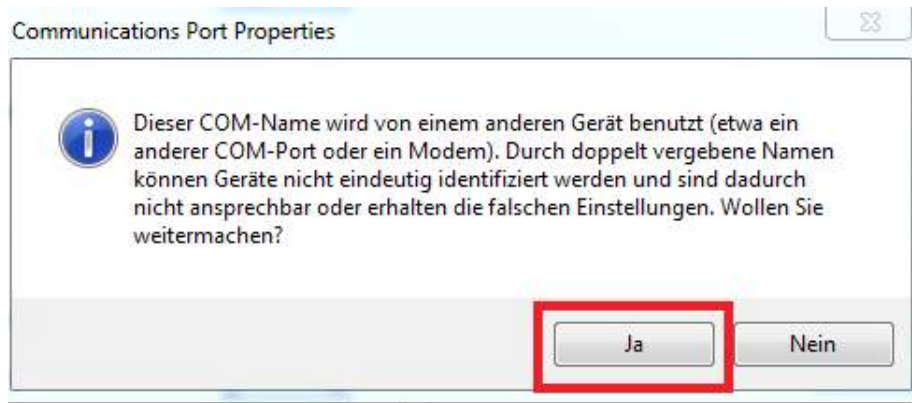


* The specification (already used) is not mandatory.

After selecting COM9, click <OK> in the upper right corner of the window.

Most likely, you will now see a message that the COM9 port is already in use.

Ignore this message and click <Yes> or <Okay>,



Close all windows and restart the computer.